

# 10 JULY 2018

4:00–6:00pm  
Marina Bay Sands  
Sands Expo &  
Convention Centre  
Level 3  
Begonia 3003 / 3103

Networking & Registration  
from 3:45 - 4:00pm

CLC-SI Panel Discussion

## Age-Friendly Cities:

Sharing from  
Asian Cities

Admission is free.

Register **HERE**

Seoul and Singapore are rapidly ageing societies. Over the years, both cities have introduced comprehensive policies and initiatives to prepare themselves for a rapidly ageing population, encompassing infrastructure improvements, care and healthcare services and senior friendly housing options.

The Centre for Liveable Cities (CLC) and the Seoul Institute (SI) are collaborating on a joint research project on “Age Friendly Cities: Lessons from Seoul and Singapore”, to examine the efforts by both cities in planning for an ageing population and discuss the challenges going forward.

As part of the collaborative research process and in conjunction with the World Cities Summit 2018, CLC and SI have put together a panel discussion with experts from Seoul and Singapore. Joining this panel is also Mayor of New Taipei City, who will share insights on New Taipei City’s initiatives for an age-friendly city. The panel will be moderated by environmental gerontologist and Founder of Ibasho, Dr Emi Kiyota. She will also share the relevant experiences of three cities and distil common lessons in planning for age-friendly cities.



This is a co-located event of:



This lecture is co-organised by:



Image credit: People's Association

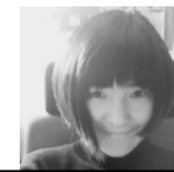
Image credit: The Seoul Institute



Panellist

**Dr Eric Chu**  
Mayor of New Taipei City

Dr. Eric Liluan Chu serves as the first and the incumbent Mayor of New Taipei City since the city was upgraded and reorganized from its former entity Taipei County in 2010. Mayor Chu and his administration have put forward transformative innovative policies to build a city to cope with urban challenges of the modern age, including energy, demography, economic development and urban revitalization, among others. These reform programs have yielded successful results, and were recognized nationally and internationally.



Panellist

**Dr Miree Byun**  
Senior Research Fellow,  
Department of Urban Social  
Policy Research,  
The Seoul Institute

Dr Miree Byun is a demographer, whose research areas lies in social changes and urban monitoring for enhancing the quality of citizens’ lives. Her work focuses on an international comparative study on government policy for urban competitiveness. Her publications include Framework of the Inclusive City Indicators and the Inclusiveness of Seoul (2017), The Quality of Life in Megacity and Seoul-Specific Happiness Indicator (2015), and Building the Neighborhood and Social Integration in Seoul (2011).



Panellist

**Dr Belinda Yuen**  
Research Director,  
Lee Kuan Yew Centre for  
Innovative Cities,  
Singapore University of  
Technology and Design

Dr Belinda Yuen is the Research Director and Professorial Fellow at the Lee Kuan Yew Centre for Innovative Cities. She is a qualified urban planner and has published extensively on spatial planning, urban policy analysis, and most recently, on planning livable, sustainable cities. She has been elected as the President of Singapore Institute of Planners and the Vice-President of the Commonwealth Association of Planners. She has also served on numerous local and international urban planning committees including the International Advisory Board of United Nations State of World’s Cities Report.



Moderator

**Dr Emi Kiyota**  
President, Ibasho

As an environmental gerontologist, Dr Emi Kiyota focuses on improving both the built environment and the organizational culture of long term care for elders. Inspired by living in a nursing home during her graduate studies, Kiyota has become an expert on age-friendly housing, hospitals, and clinical care centers and frequently speaks on these issues at international gatherings. In 2010, she founded Ibasho, a non-profit organization dedicated to creating socially, economically, and environmentally sustainable communities that value their elders.